

Conn Booster Trumpets & Cornets

Elkhart c.1912-1913

The Conn Loyalist website has both a large bore cornet and trumpet listed as "Unknown Model". After several years of keeping track of existing Conn cornets and trumpets, I was able to match these with examples from the 1912 to 1913 period.

Cornets have a range from 124135 to 127323 and trumpets from 124884 to 132731.

The trumpets do not have any known match in catalogs or advertising from the period and only one ad in the March 1914 "Musical Truth" shows the cornet as "The Booster" model. For this article, I will refer to both as Booster models.

"THE BOOSTER"

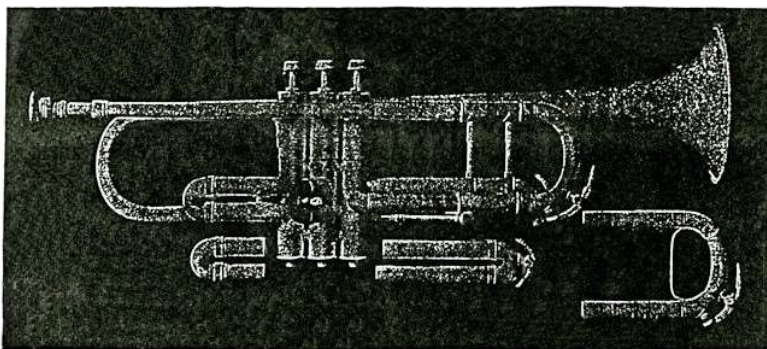
*Has them all "faded" for powerful tone. The loudest of them all.
Positively without an equal as a Trumpet Model Cornet*

A MARVELOUS Trumpet Model Cornet that is unsurpassed for ease of playing, bright, brilliant, powerful tone and good scale throughout its entire register. The Cornetist who plays this Cornet out of tune ought to be put out of the business. A Cornet without a good scale is an abomination. All of Mr. Conn's new Cornets are above and beyond criticism, so far as good intonation is concerned. In this respect the Booster Trumpet Model Cornet is a Wonder. Test the scale of this new Cornet with other Cornets. That will tell the story.

The wind passage of the Booster Trumpet Cornet is absolutely free and unobstructed. There are no short turns, crooks or slides to cause the instrument to play hard or to disturb the sound wave air column and create a false intonation. The air column from the mouth-piece to the end of the bell is without a reverse curve or abrupt turn so common to other Cornets.

That is the Reason Why the Booster Trumpet Model Cornet Plays So Easy

"THE BOOSTER"



Length 18 inches; weight 2 lbs. 4 oz. High and Low Pitch, or Low Pitch alone, also Quick Change to A. The Quick Change Device is so constructed that it is combined with the Tuning Slide, and does not in any way interfere with the Wind Passage by introducing Short Bends and Curves that cause the Cornet to play harder. The Booster Cornet is supplied with an interchangeable rim mouth-piece that can be used either as a Cornet or Trumpet Mouth-piece. The Booster Trumpet Cornet may be used either as a Cornet or Trumpet. Sold either for cash or installments. A liberal discount will be given on cash orders. No discount when old instruments are taken in exchange.

We are going to sell three hundred of this model very cheap, after which the regular price will be demanded

This is a great Cornet for the fellow who desires to "tear the roof off" with perfect ease. It possesses a rich quality of tone for orchestra and can be played as Pianissimo as any Cornet made. This Cornet will save all lung-busters or champions of stiff, stuffy, hard blowing, truck-horse style of Cornets that are audaciously advertised as high-grade, easiest blowing Cornets, from throat and lung trouble and lip paralysis—so prevalent among those who have tried in vain to succeed on that class of Cornets.

Wake up, brother. This is the 20th Century. This is America, and the Conn Wonder Factory is here to give you more than your money's worth.

Try a Booster

Remember—The first 300 only at almost your own price, and we sell regularly over 400 Cornets per month. If you don't believe it, come and see us. We will prove it.

Address C. G. CONN Inc. Elkhart, Indiana

In 2023, I acquired cornet #124135, which also happens to be the earliest example that I have found for this model. Since Conn #121729 had a guarantee date of December 1911, and Conn #126406 is said to have been purchased new in 1912, I am pretty confident that mine dates to early 1912.



All of the cornets and trumpets are marked on the middle valve casing with “L” for the Conn 2-1/2 bore of 0.485”; an amazing bore size even for today. This one came with the case and high pitch slides but was missing the “Booster” mouthpiece.



Unusual design features are the rear lead pipe brace commonly found on standard cornets of the period, a curved front bell brace, and a reversed first slide top tube.

Cornet #124917 from Horn-u-copia.net



Trumpet #124942 courtesy Robb Stewart. This also came with high and low pitch slides.



Cornet #126406 from the National Music Museum (the only change is a bottom water key).



Trumpet #127227 missing one of the tuning slide braces (auction photo).



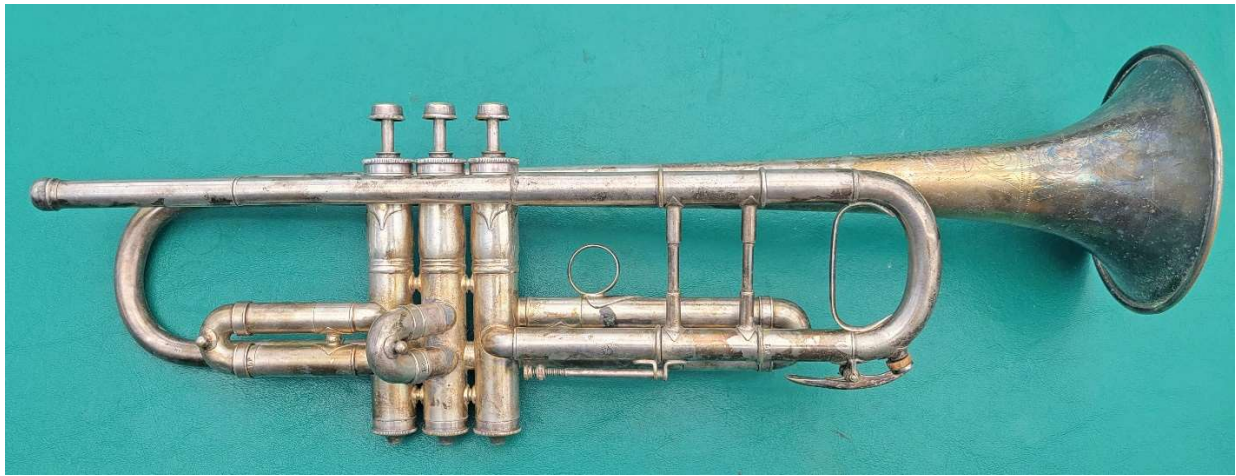
Cornet #127323 with the water key back in front and possible added pinky hook (auction).



Trumpet #130731 now with a third slide ring (Horn-u-copia.net). This has a change in bell bracing.



Trumpet #131503 back to a bottom water key (author's photo).



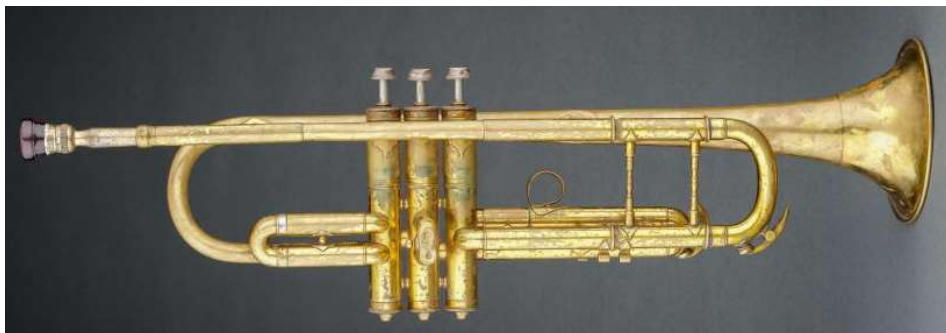
Unique bell bracing that appears to be original. The front one is reversed.



Trumpet #132731



Trumpet #147815 is similar in design but is the medium-bore New Wonder model.



Here is #131503 all restored and with a 1920's mouthpiece added.



Comparing the cornet (top) to the trumpet, the design is a little different.

Bells even



Valves even

